

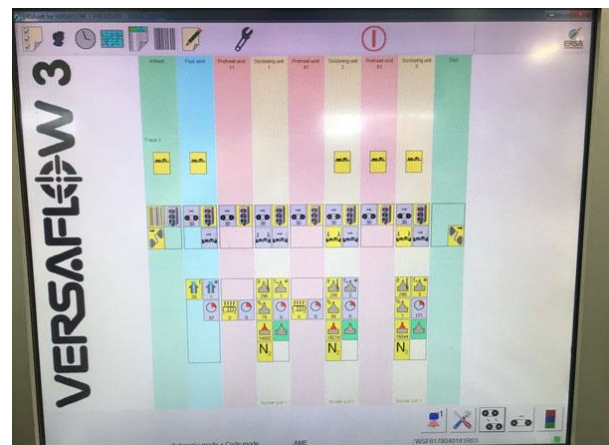
# ERSA Versaflow 3/45

Make        ERSA  
 Model      Versaflow 3/45  
 Vintage    05.2011  
 Options    3 Pot configuration  
 Condition   Excellent



## Configuration/options

- Fluxer with side positioning unit
- IR Preheater for soldering unit 1 and 2
- 3 Soldering units each with
  - o Warpage detection
  - o Automatic solder wire feeder
  - o High resolution camera's
- SMEMA



Additional pictures below.



**ERSA** -Typ/type: Versaflo 3/45  
 Maschinen Nr./machine no: S011A-11F0090  
 Baujahr/year of manufacture: 05.2011  
 P<sub>N</sub>: 41 kW U<sub>N</sub>: 400 V  
 I<sub>N</sub>: 66.5 A f<sub>N</sub>: 50 / 60 Hz  
 Max. Vorschicherung/max. fuse rating: 3 x 160 A trip/curve  
 Netzanschluss/ power supply: 3 /phase/N/PE  
 Absaugmenge/ exhaust: 4 x 150 m<sup>3</sup>/h  
 Druckluftanschluss/compressed air: opt. min. 6bar, max. 8bar  
 Stickstoffanschluss/ nitrogen supply: opt. min. 8bar, max. 10bar  
 Ersa GmbH 97877 Wertheim, Germany "powerreduction"



