

2D AOI Series

MV-3



- 18 Megapixel Top Camera
- Telecentric Lens
- Intelli-Beam® Laser Technology
- 18 Megapixel Side-Viewer®
- 8 Phase Coaxial Color Light

2D AOI Series

MV-3

MV-3 Series is a Desktop AOI product of Mirtec. It is an off-line vision inspector with 18 Megapixel camera, laser scan, 18 Megapixel side cameras and 8 phase coaxial color lighting system applied to give optimal results to various production processes.



High Resolution 18 Megapixel Camera

With 18 Megapixel high resolution camera more precise and stable inspection is possible and with 4 additional 18 Megapixel side camera gives an outstanding inspection quality and user convenience.

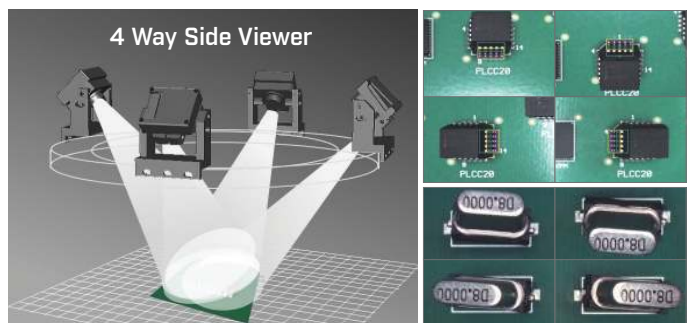
18 Megapixel Top Camera

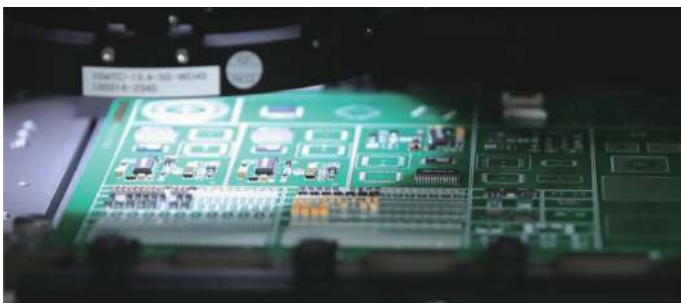
- Pixel resolution 80% increased compared to 10 Megapixel Camera
- Q201 Chip (mm) / 0.3 Pitch (mm) IC lead capability



18 Megapixel Side Camera

- 4 cameras in EWSN applied
- The only J-lead & QFN inspection solution
- Full-PCB inspection with side cameras



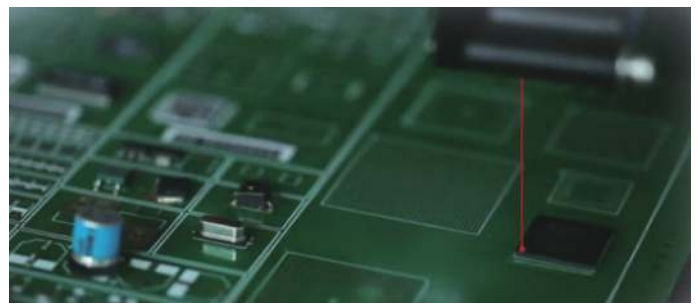


8 Phase Coaxial Color Light System for Higher Precision

Through 8 different lights combination a clear noise-free image is obtained to give various types of precise defect detection.

- Color change extraction following angle for reflection
- Ideal for Chip / IC lead lift and solder joint defect detection
- Precise Solder Joint inspection

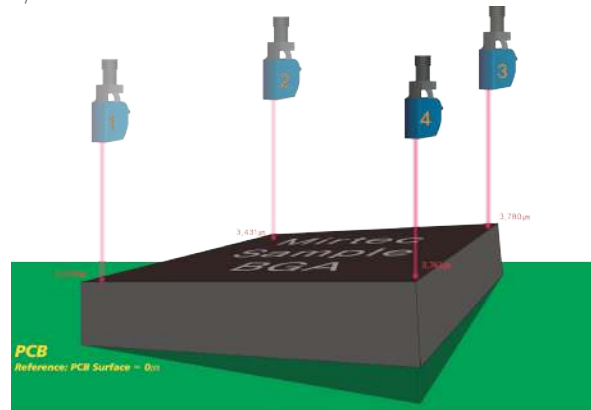
Lighting	PCB Noise	Color Light Noise and Uniformity	Fiducial Mark Reading Precision
6 Phase Color Light 			
Improved image			
8 Phase Coaxial Color Light 			



Intelli-Scan® Precise Lift Detection

IC lead/CSP/BGA defect found by laser scanner. Intelli-Scan® is the optimal solution in inspecting for component lift.

- With precise laser Scanner 8µm unit height measurement
- IC Lead/package fine lift detection
- With Laser Unit rotation, component/lead interruption minimized
- Asymmetric connection lead lift detection



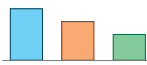


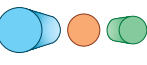
Strong User Convenience

- User friendly GUI
- Automatic teaching with use of Enormous Library; beginners can teach easily
- Minimized saving space with defect part image compression



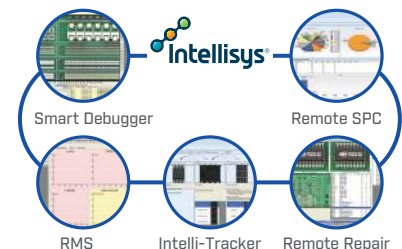
Telecentric Lens

- Image distortion found in conventional lens
- Clearer image
- Precise inspection

	Telecentric Lens	Conventional Lens
Side		
Top		

Intellisys® System

When a defect occurs in the line, understanding in advance as well as remote control is possible while reducing costs from defective products



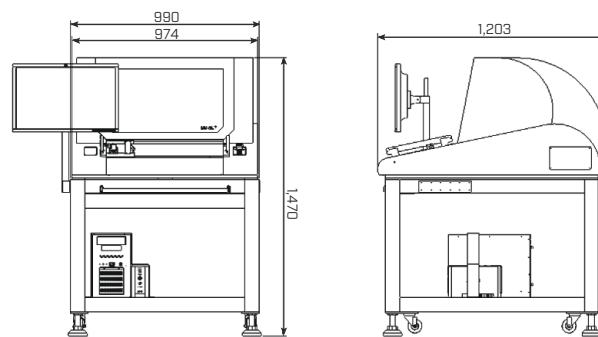
Specifications

Model		MV-3	
PCB Size Range		50 × 50 ~ 450 × 400 mm	
Benchtop AOI			
Inspection Speed			
18 Megapixel Camera	7.3 μm	3,213 mm ² / Sec	
	9.8 μm	5,604 mm ² / Sec	
10 Megapixel Camera	9.8 μm	3,007 mm ² / Sec	
	13.4 μm	5,293 mm ² / Sec	
Inspection item			
Minimum Component Inspection	7.3 μm	0201 Chip (mm) / 0.3 Pitch (mm)	
	9.8 μm	0402 Chip (mm) / 01005 Chip (inch) / 0.3 Pitch (mm)	
	13.4 μm	0603 Chip (mm) / 0201 Chip (inch) / 0.4 Pitch (mm)	
System Specification			
2D Inspection Technology		ISIS® Vision System	
Lens Configuration		Precision Telecentric Compound Lens	
Lighting System		8 Phase Coaxial Color Lighting System	
Side Viewer® Camera System (Option)	Main Cam. Spec	18M CXP	18/10 Megapixel Digital Color Cameras (4 set)
		10M CL	10 Megapixel Digital Color Cameras (4 set)
Laser Inspection System (Option)	Intelli-Beam®	Resolution	8 μm / Point
		Accuracy	±20 μm
		Max. Height	10 mm
Software		Built-in SPC, Built-in Repair	
Backup Unit (Option)		RMS, RRS, IRS, OLTT, RDS, Remote SPC, ePM-AOI	
PCB Top Side Clearance		Backup Pin	
PCB Bottom Side Clearance		45 mm	
PCB Thickness		50 mm	
Maximum PCB Weight		0.5 mm - 3 mm	
Robot Positioning System		3 kg	
Power Requirements		Closed Loop Stepping Motor System	
Air Requirements		Single Phase(s) 100-240V 50-60Hz, 1.1 kW	
Dimension and Weight			
Dimension		990(W) × 1,203(D) × 1,470(H) mm	
Weight		Approx. 450 kg	

* We will not be responsible for any problems caused by using unverified BARCODE READER. Contact our HQ for the list of allowed BARCODE READER models to use.

Dimension

(Unit : mm)



• Data subject to change without notice.



MIRTEC CO., LTD. [Headquarter]

SK Ventium 103-803, 166, Gosan-ro, Gunpo-si, Gyeonggi-do, 15850, Rep. of Korea
www.mirtec.com

Sales / CS : +82-1544-1062