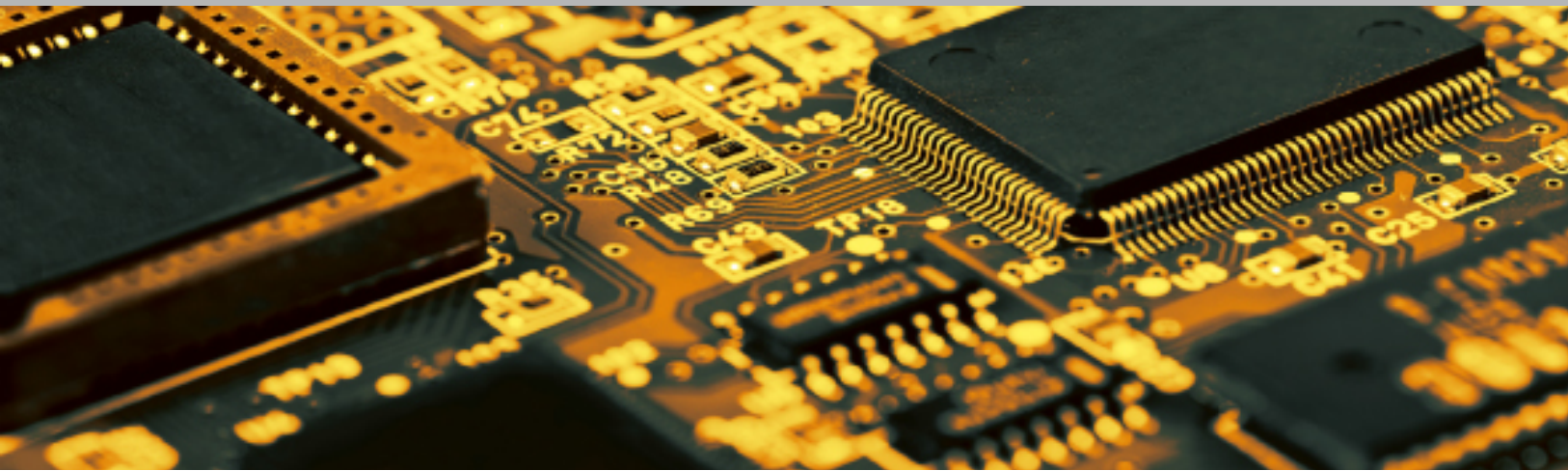


3D AOI Series

MV-6 OMNI

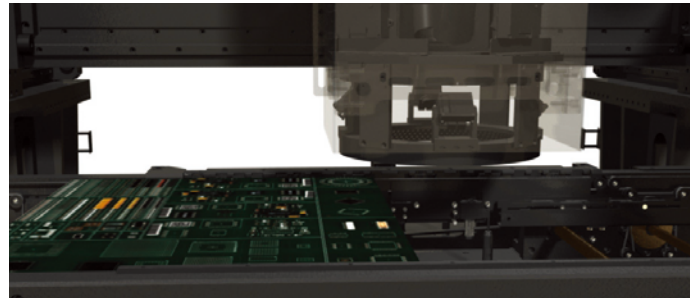


- 25/15 Megapixel Top Camera
- 12 Projection Moiré Technology
- 8 Phase Coaxial Color Light
- 18 Megapixel Angled Camera

3D AOI Series

MV-6 OMNI

MV-6 OMNI Series is a Full-3D inline vision inspector with 25 Megapixel high resolution camera, Digital moiré 12 projections, 18 Megapixel side cameras and 8 Phase coaxial color lighting system to allow inspection up to Ø3015 (mm) chip.



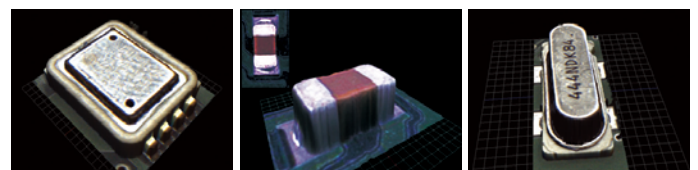
Digital 12 Projection Moiré Technology

Moiré Projection Unit measures a component in EWSN 4 directions to obtain 3D image for failsafe and high-speed defect detection.



- Obtain 3D image without blind spots using 4(four) 3D projections
- Various component height inspection with the combination of high, medium and low frequency moiré pattern
- Linkage with the main camera to apply Full 3D inspection to detect various defects flawlessly

Frequency	1. Projector	2. Projector	3. Projector	4. Projector
High				
Medium				
Low				

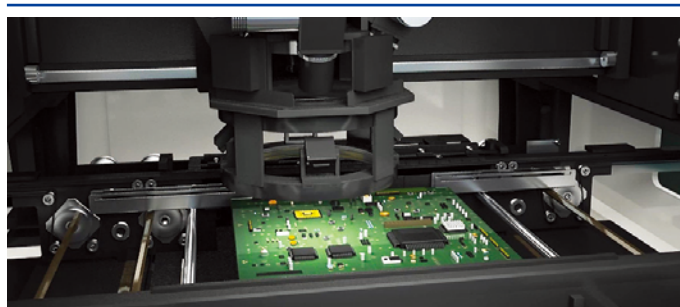




High Resolution 25 Megapixel Camera

We are proud to have applied the next generation vision system with the 25 Megapixel high resolution camera for more precise and stable inspection and high speed CoaXPress transmission method to allow 4 times more data transmission and 40% increased process speed.

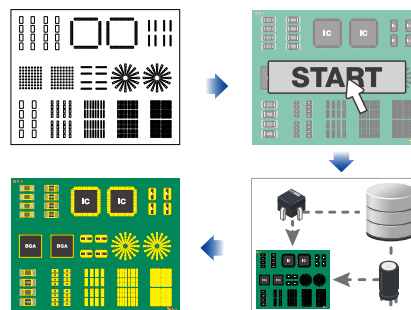
- 25 Megapixel Camera Loaded
- CoaXPress high performance vision system applied
- Large FOV to increase inspection speed
- Processing speed increased by 40% compared to Camera Link



Deep Learning applied Auto Teaching Tool

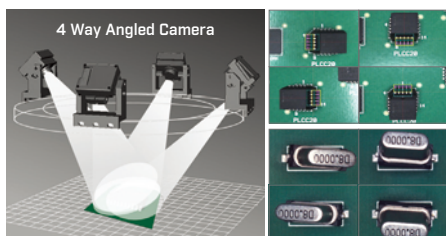
Inspection software which is applied Deep Learning solution search the most suitable component information and teach the component automatically. User would have the best inspection quality always regardless of user's skill as all of process will be done by a few clicks.

- Reduce teaching time more over 90% than manual teaching
- Secure the best inspection quality through working process standardization
- Accurate component searching and matching by applying Deep Learning solution



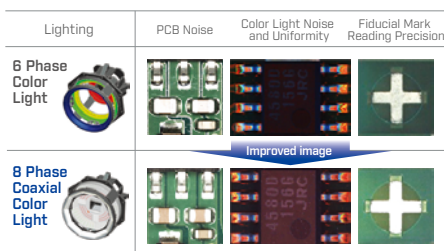
18 Megapixel Angled Camera

- 4 cameras in EWSN applied
- The only solution for J-lead, QFN and Coil Solder inspection
- Full-PCB inspection with side cameras



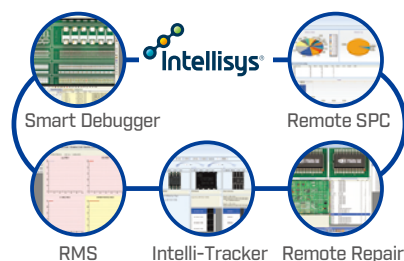
8 Phase Coaxial Color Light

- Color change extraction following angle of reflection
- Ideal for Chip / IC lift, micro crack and solder inspection
- Precise solder joint inspection



Intellisys® System

Possible to recognize in advance when a defect occurs in the line and support to reduce cost due to defects by remote controlling.



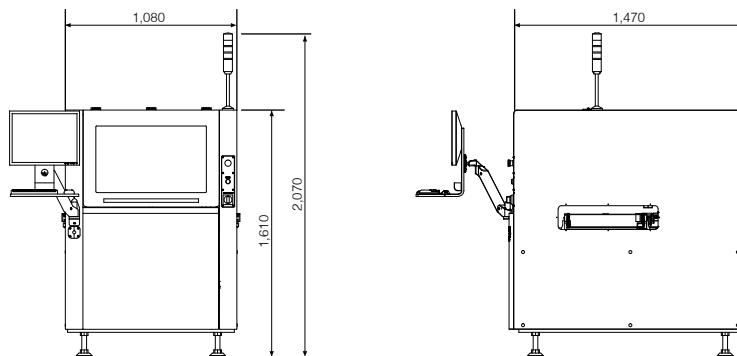
Specifications

Model			MV-6 OMNI
PCB Size Range			
Single Stage Conveyor	Single Lane		50 x 50 ~ 510 x 510 mm
	Dual Lane		50 x 50 ~ 510 x 590 mm(Single) / 50 x 50 ~ 510 x 300 mm(Dual)
Triple Stage Conveyor (Option)	Single Lane		50 x 50 ~ 330 x 510 mm / 50 x 50 ~ 510 x 510 mm
	Dual Lane		50 x 50 ~ 330 x 280 mm(Dual)
Flipper (Option, Triple CV)			50 x 50 ~ 460 x 400 mm
OMNI-VISION® 3D / 2D Inspection Technology			
3D Inspection Technology			Digital 12 Projection Moiré Technology
Height Accuracy			±3 μm
3D / 2D Maximum Inspection Speed			
25 Megapixel Camera	CoaXPress	7.7 μm	1,460 mm² / Sec
15 Megapixel Camera	CoaXPress	10 μm	1,890 mm² / Sec
		15 μm	4,260 mm² / Sec
2D Maximum Inspection Speed			
25 Megapixel Camera	CoaXPress	7.7 μm	4,593 mm² / Sec
15 Megapixel Camera	CoaXPress	10 μm	5,080 mm² / Sec
		15 μm	10,716 mm² / Sec
System Specification			
Lighting System			8 Phase Coaxial Color Lighting System
Side Camera System		Option	18/10 Megapixel Digital Color Side Camera (4ea)
Software		Standard	Built-in SPC, Built-in Repair
		Option	RMS, RRS, IRS, OLTT, RDS, Remote SPC, ePM-AOI
PCB Top Side Clearance			45 mm
PCB Bottom Side Clearance			50 mm
PCB Thickness		Standard	0.5 mm - 5 mm
		Flipper	1.5 mm - 2.6 mm
Maximum PCB Weight		Standard	4 kg
		Flipper	3 kg
Minimum Measurement Size	25M CXP Camera	7.7 μm	03015 Chip (mm) / 0.3 Pitch (mm)
	15M CXP Camera	10 μm	03015 Chip (mm) / 0.3 Pitch (mm)
		15 μm	0603 Chip (mm) / 0201 Chip (inch) / 0.4 Pitch (mm)
Robot Positioning System		X/Y Axis	Servo Motor System
Power Requirements			Single Phase(s) 200-240V 50-60Hz, 1.1 kW
Air Requirements			5 Kg / cm² (0.5 MPa), 5 LPM
Dimension and Weight			
Dimension	Machine		1,080(W) x 1,470(D) x 1,610(H) mm
	Width (Machine & Conveyor)	Single Stage Conveyor	1,110 mm
		Triple Stage Conveyor	1,110 mm(DL) / 1,270 mm(SL, S size PCB) / 1,630 mm(SL, M size PCB)
		Flipper (Triple CV)	1,550 mm
Weight	Single Lane		Approx. 950 kg
	Dual Lane		Approx. 1,000 kg
	Flipper (Triple CV)		Approx. 1,000 kg

* We will not be responsible for any problems caused by using unverified BARCODE READER. Contact our HQ for the list of allowed BARCODE READER models to use.

Dimension

(Unit : mm)



• Data subject to change without notice.



MIRTEC CO., LTD. [Headquarter]

SK Ventium 103-803, 166, Gosan-ro, Gunpo-si, Gyeonggi-do, 15850, Rep. of Korea
www.mirtec.com

Sales / CS : +82-1544-1062