



A Leader in the Intelligent X-Ray
Inspection Equipment

CX7000L

X-Ray SMD Chip Counting System



www.global-xray.com
www.unicomp.cn

CX7000L



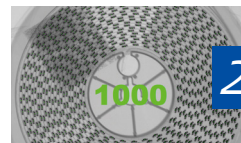
Application Fields

<i>Reels</i>	<i>Accuracy</i>	<i>Others Components</i>	<i>Accuracy</i>
01005	99.99%	Transistors	99.99%
0201	99.99%	Bulks	99.99%
0402	99.99%	ESD Packages	99.9%
0603	99.99%	Tubus	100%
0805	99.99%	JEDEC TRAY	100%
1206	99.99%	Other Resistance & Capacity	99.99%

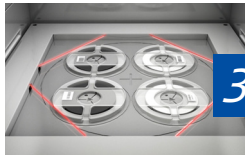
Functions and Features



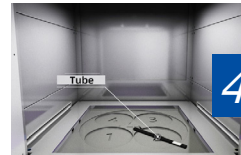
1 Fingerprint Access Management and Real-time Monitoring of Radiation



2 Anti-interference Counting Algorithm



3 Embedded Sensors for Identifying Reels



4 AI Technology for Counting Different Components

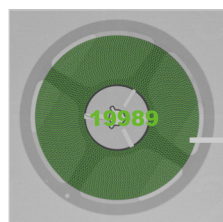


5 Intelligent QR Reading System

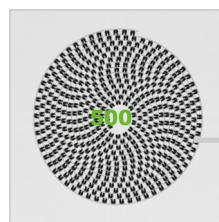


6 Full Anti-pinch Hand System

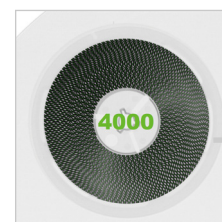
Inspection Images



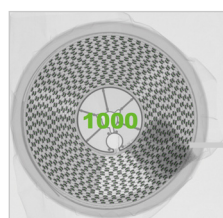
01005



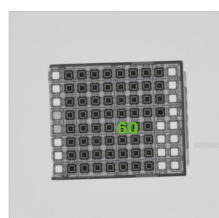
Chips



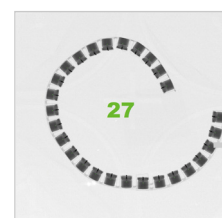
Abnormal Components



ESD / HSC



TRAY



Bulks



A Leader in the Intelligent X-Ray Inspection Equipment

Technical Parameters and Specifications

System Summary

Footprint	800(W)×1380(D)×1950(H)mm	Plywood Packing Size	1050(W)×1650(D)×2200(H)mm
Machine Weight	800 kg	Packing Weight	1000 kg
Power Spupply	AC 110/220V, 50/60Hz	Power Consumption	Max. 1.5kW

X-Ray Tube

Tube Type	Sealed	Current	Max. 1000 μ A
Voltage	50 kV / 80kV	Focus Spot Size	0.03 mm

Imaging System

Detector	Flat Panel Detector (FPD)	Pixel Size	139 μ m
Effective Inspection Area	430*430mm	Frame Rates	2 fps
Pixel Matrix	3072*3072 pixel	AD Conversion	16 bits

Inspection Ability

Tape & Reel size	7''-17''
Scan Height	\leq 80mm
Inspection Min. Component	01005
Inspection Accuracy	\geq 99.99%
Inspection Speed	< 10s/Tape & Reel (7''-17'') < 10s (7''*4 Tape & Reel)

Industrial PC

Monitor	27'' FHD LCD Display
System OS	Windows 10 64bit
Hard Disk	256G (SSD) + 1T (HDD)
RAM	16 GB
CPU Model	Intel i7 Processor

Support Connection with MES, ERP and WMS Intelligent Storage System.

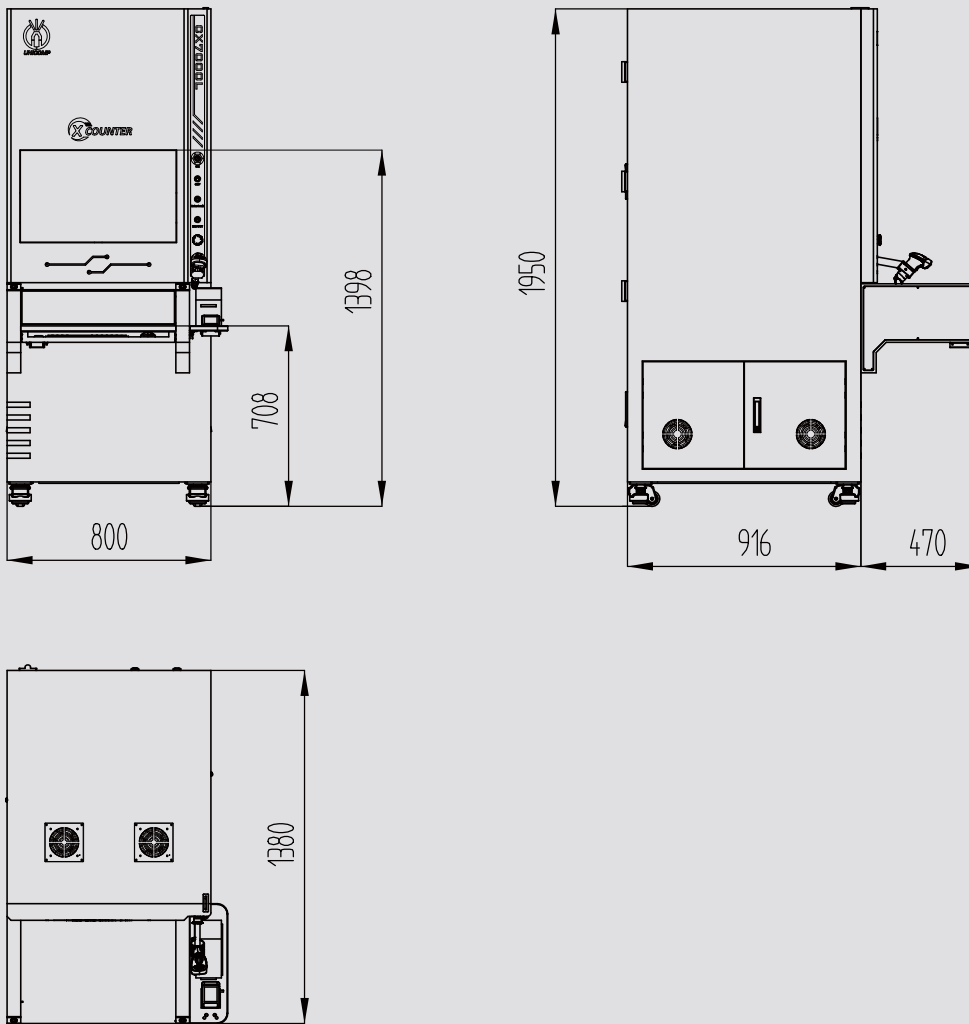
Other Features

Door Open	Auto-door, Anti-Pinch	Feeding Method	Manual
Radiation Monitoring	Safety Protection, Real-time Monitoring of Radiation	X-Ray Safety	<1 μ Sv/h (Meets All International Standards)
Accessories	Barcode scanner, Printer, Portable Radiation Meter, Finger-Print Recognition	Authority Management	Fingerprint Access Management System, and Support Password Accessing.

Dimensions and Appearance



Scan the QR-Code to visit
more information



UNICOMP TECHNOLOGY CORPORATE:

Wuxi Unicom Technology Co., Ltd (HQ)

No. 11, Lijiang Road, Xinwu District, Wuxi City, Jiangsu Province, P.R.C.

Zip Code: 214112

TEL: +86-510-68506688

FAX: +86-510-81816018

Shenzhen Unicom Technology Co., Ltd

Building 2A, Baoxin Technology Park, Guangyuan 5th Road, Guangming District, Shenzhen, Guangdong Province P.R.C. Zip:518107

TEL: +86-755-26650316

FAX: +86-755-26650296

Chongqing Unicom Technology Co., Ltd

1st Building, No.23 Fushun Blvd, Biquan Street, Bishan District, ChongQing, P.R.C.

Zip Code: 402760

TEL: +86-23-63226131

FAX: +86-23-63228366