

YASKAWA

MOTOMAN MH50-20 II

Handling & General Applications with the MH-series

The MOTOMAN MH50-20 II is a dynamic, high-speed robot featuring an extended reach for large parts. It offers superior performance in arc welding, coating, gluing, dispensing, material cutting and material handling applications.

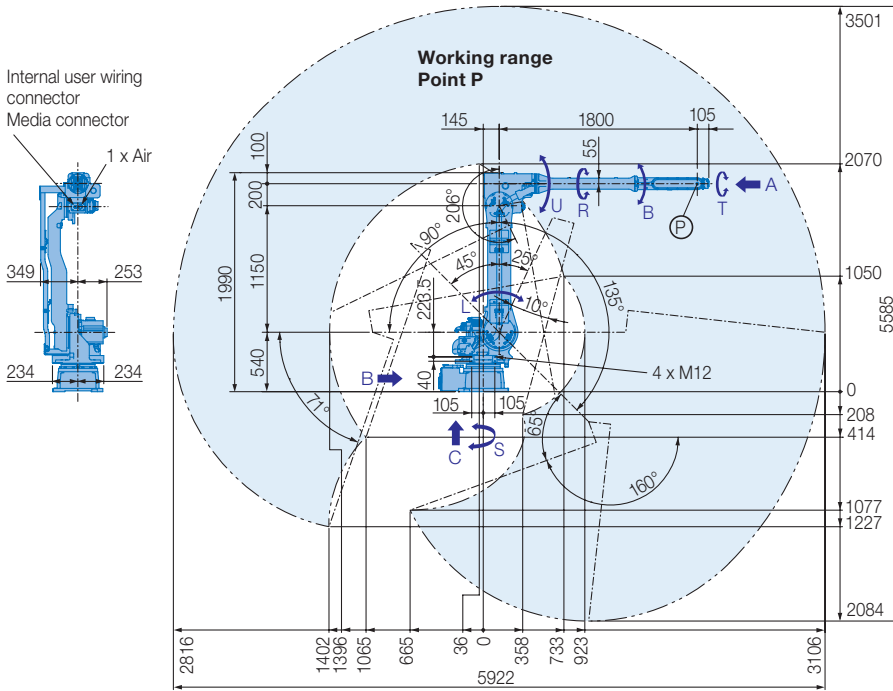


KEY BENEFITS

- High repeatability ± 0.15 mm
- Ideal for a variety of applications, multi-purpose robot
- Very wide motion range
- Small interference radius reduces floorspace requirements
- Specifically designed for processing large parts

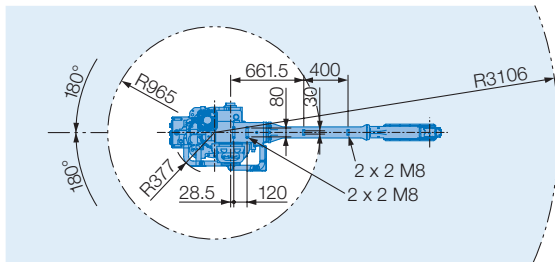
Controlled by
DX200

MOTOMAN MH50-20 II

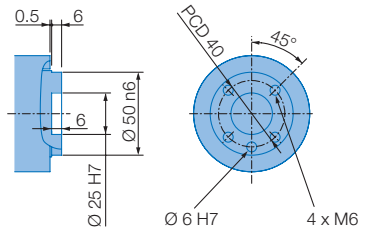


Please note wall mounting option:
+/- 30°
S-axis limit

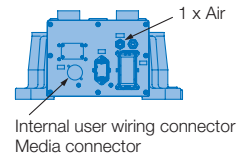
Please note ceiling mounting option:
Depends on B-axis position



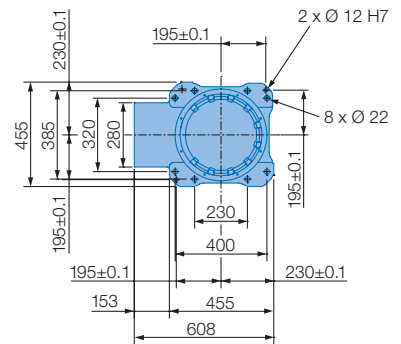
View A



View B

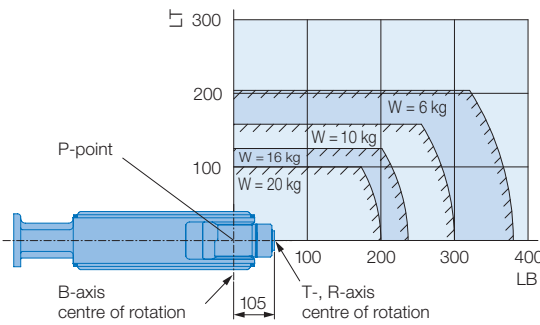


View C



Mounting options: Floor, ceiling, wall

Allowable wrist load



Wrist + U-arm in front	Up to 20 kg for attaching load mass including wrist load
U-arm behind	Up to 10 kg, 49 N · m (5 kgf · m) max. for increased moment amount of upper arm (floor-, ceiling-mounted type only)
S-axis below	Up to 30 kg (floor-, ceiling-mounted type only)

All dimensions in mm | Technical data may be subject to change without previous notice | Please request detailed drawings at robotics@yaskawa.eu.com – YR-MH00050-J10, D-05-2015, A-No. 167073

Specifications MH50-20 II

Axes	Maximum motion range [°]	Maximum speed [°/sec.]	Allowable moment [Nm]	Allowable moment of inertia [kg · m ²]	Controlled axes	
					Max. payload [kg]	
S	±180	180	-	-	Repeat. pos. accuracy [mm]	±0.15
L	+135/-90	178	-	-	Max. working range [mm]	R = 3106
U	+251/-160	178	-	-	Temperature [°C]	0 to +45
R	±190	400	39.2	1.05	Humidity [%]	20 - 80
B	±230/-50	400	39.2	1.05	Weight [kg]	495
T	±360	600	19.6	0.75	Power supply, average [KVA]	3.5

YASKAWA

robotics@yaskawa.eu.com
www.yaskawa.eu.com

YASKAWA Headquarters

YASKAWA Europe GmbH · Robotics Division
Yaskawastraße 1 · D-85391 Allershausen
Tel. +49 (0) 8166/90-0 · Fax +49 (0) 8166/90-103

YASKAWA academy and sales office Frankfurt

YASKAWA Europe GmbH · Robotics Division
Hauptstraße 185 · D-65760 Eschborn
Tel. +49 (0) 6196/77725-0 · Fax +49 (0) 6196/77725-39